

MONTHLY MEMBERSHIP PROGRESS REPORT

District 320 E

Results as of: 6/30/2024

GMT:

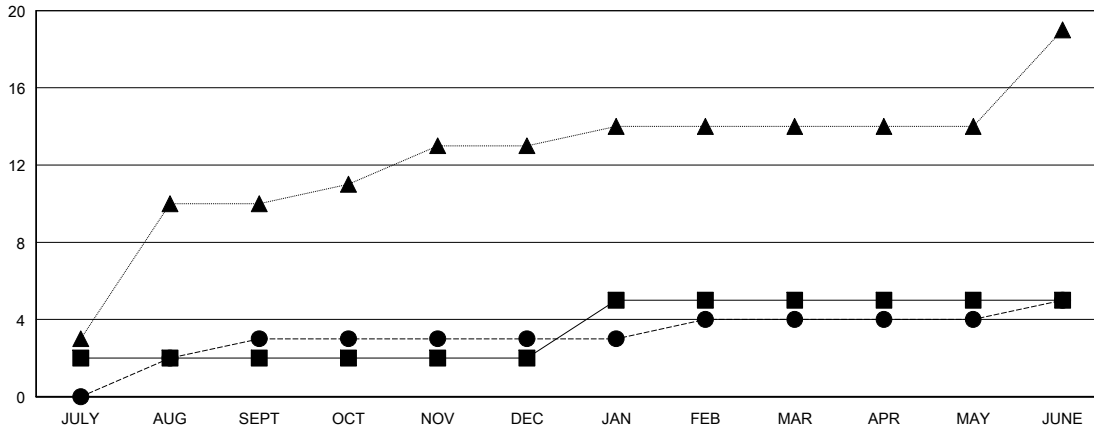
LOCATION INDIA

GMT CA

Clubs			
RESULTS FOR 2023-2024			
QUARTER	NEW CLUB GOAL	NEW CLUBS	DROPPED CLUBS
JULY/AUG/SEPT	2	3	2
OCT/NOV/DEC	0	0	8
JAN/FEB/MAR	3	1	0
APR/MAY/JUNE	0	1	2

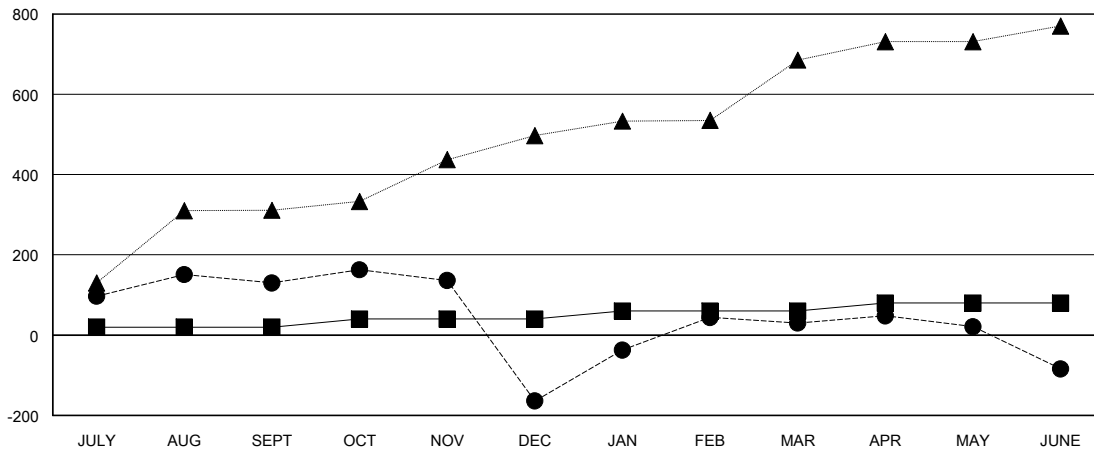
Members			
RESULTS FOR 2023-2024			
QUARTER	MEMBER GROWTH NET GOAL	MEMBER GROWTH ACTUAL	DROPPED MEMBERS ACTUAL (including transfers)
JULY/AUG/SEPT	20	284	143
OCT/NOV/DEC	20	101	391
JAN/FEB/MAR	20	262	27
APR/MAY/JUNE	20	379	420

GOALS AND ACTUAL NEW CLUBS CUMULATIVE



- - CURRENT YEAR GOALS FOR NEW CLUBS
- - CURRENT YEAR ACTUAL NEW CLUBS
- ▲ - LAST YEAR ACTUAL NEW CLUBS

GOALS AND ACTUAL MEMBERS CUMULATIVE



- - MEMBER GROWTH NET GOAL
- - MEMBER GROWTH ACTUAL
- ▲ - LAST YEAR MEMBERSHIP ACTUAL

DROPPED CLUBS: 12	53 CLUBS OF 81 ADDED 1 OR MORE NEW MEMBERS	GENDER DISTRIBUTION MALE 2,531 (65.88%) FEMALE 1,301 (33.86%)
DROPPED MEMBERS DECEASED 9 CLUB CANCELLED 280 OTHER 691 TOTAL 980	CLICK HERE FOR CUMULATIVE MEMBERSHIP DATA	TOTAL FAMILY UNIT MEMBERS 2,594 FAMILY MEMBERS PAYING HALF DUES 1,532